

# G-58 SERIES

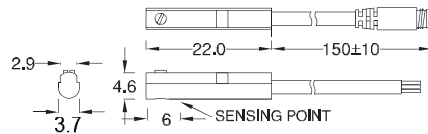


# Magnetic switch

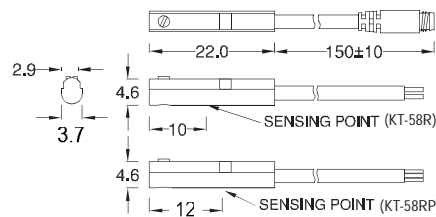


## ■ DIMENSION

G-58N, G-58P / G-58N-QD, G-58P-QD

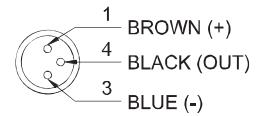


G-58R, G-58RP / G-58R-QD, G-58RP-QD

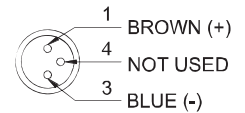


## ■ QD PINOUT

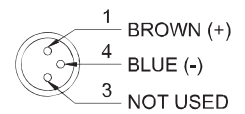
\*3 wire QD wiring



\*2 wire QD wiring



\*2 wire EQD wiring



Unit:mm

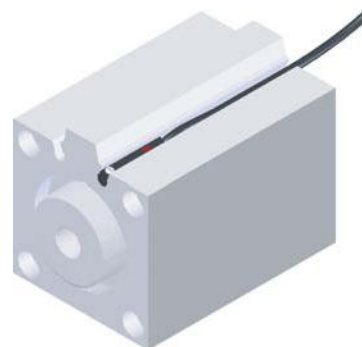
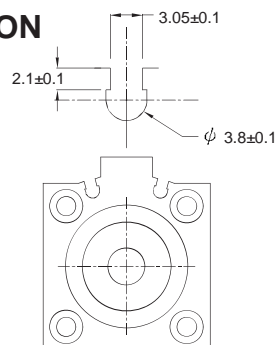
## ■ SPECIFICATION

TYPE	G -58R	G -58N	G -58P	G -58RP
CONNECT DIAGRAM				
CHARACTERISTICS				
WIRING METHOD	2-Wire Type	3-Wire Type		
SWITCHING LOGIC	SPST, Normally Open	Solid State Output, Normally Open		SPST, Normally Open
SENSOR TYPE	Reed Switch	NPN Current Sinking	PNP Current Sourcing	Reed Switch
OPERATING VOLTAGE	5~120V DC/AC	10~30V DC		10~30V DC/AC
SWITCHING CURRENT	100 mA max.	200 mA max.		500 mA. max.
CONTACT RATING	10 W max.	6 W max.		10 W max.
CURRENT CONSUMPTION	--	10 mA @ 24V DC max.		5 mA @ 24V DC max.
VOLTAGE DROP	3.5 V max.	0.5 V @ 50 mA max.		0.1 V @ 100mA max.
LEAKAGE CURRENT	--	0.01 mA max.		--
INDICATOR	Yellow LED	Red LED	Yellow LED	
CABLE	ø2.5, 2C, PUR	ø2.5, 3C, PUR		
OPERATING FREQUENCY	200 Hz	1000 Hz		200 Hz
MAGNET REQUIREMENT (NOTE 1)	65 Gauss	40 Gauss		
TEMPERATURE RANGE	-10~70°C			
SHOCK (NOTE 2)	30 G	50 G		30 G
VIBRATION (NOTE 3)	9 G			
ENCLOSURE CLASSIFICATION	IEC 529 IP 67			
PROTECTION CIRCUIT (NOTE 4)	1	3,4		1

### NOTE:

1. Measuring standard target: ø15.5Xø8X5t (Anisotropy rubber magnet)
2. Sin wave / X , Y , Z 3 directions / 3 times each direction / 11 ms each time.
3. Double amplitude 1.5 mm / 10Hz~55Hz~10Hz (Sweep 1 min) / X , Y , Z 3 directions / 1 hour each time.
4. 1=None / 2=Short-circuit / 3=Power Source Reverse polarity / 4=Surge Suppression

## ■ GROOVE DIMENSION



Unit:mm

GENTLE AUTOMATIC SOLUTION SDN BHD

No.36, Jalan Industri USJ 1/13, Taman Perindustrian USJ 1, 47600 Subang Jaya, Selangor.

TEL: 603-8023 7743 / 8743 FAX: 603-8023 9743 email:sales@gentle.com.my