

JB models



|  | model | output force(ton) | bore (mm) | page |
|---|--------|-------------------|-----------|-------|
| | JB-110 | 110 | 180 | P15.2 |
| | JB-200 | 200 | 255 | |
| | JB-300 | 300 | 300 | |
| | JB-400 | 400 | 360 | P15.5 |
| | JB-500 | 500 | 400 | |
| | JB-700 | 700 | 480 | |

Bridge tension cylinders

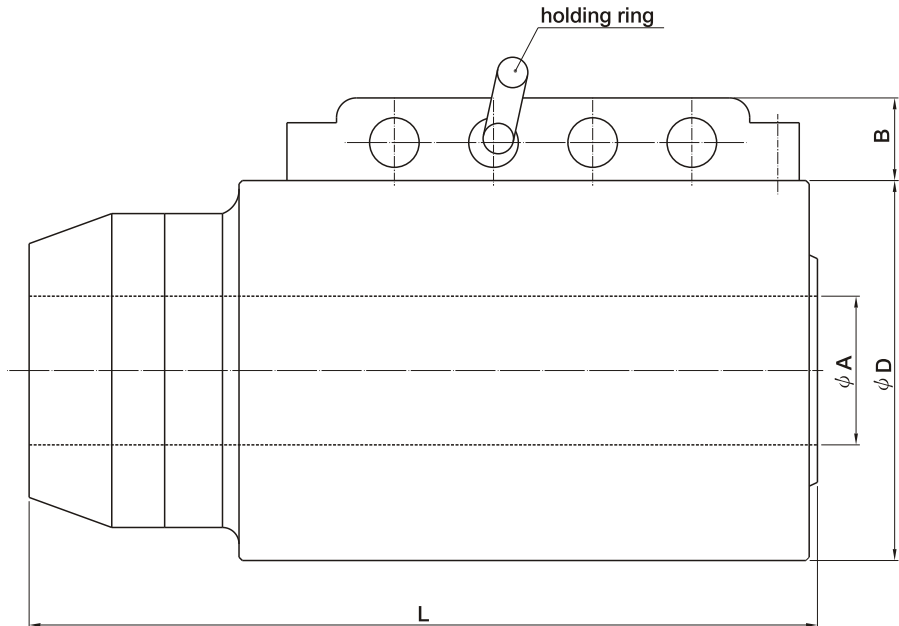
Order form

JB — 300 × 250ST
 ① ②

| JB : Bridge tension cylinders | | |
|-------------------------------|----------------------|--|
| ① | output force (ton) | 110,200,300,400,500,700 |
| ② | stroke(mm) | see the standard stroke in the dimension table (P15.3) |

External dimensions

Bridge tension cylinders



| notation model | A | B | D | L | bore(mm) | pressed area(cm ²) | stroke(mm) |
|-------------------|-----|----|-----|-----|----------|--------------------------------|------------|
| JB-110 | 90 | 50 | 230 | 477 | 180 | 159 | 200 |
| JB-200 | 115 | 60 | 310 | 537 | 255 | 356 | 250 |
| JB-300 | 145 | 71 | 365 | 568 | 300 | 479 | 250 |
| JB-400 | 165 | 71 | 435 | 602 | 360 | 703 | 250 |
| JB-500 | 185 | 71 | 490 | 668 | 400 | 876 | 250 |
| JB-700 | 220 | 71 | 590 | 722 | 480 | 1277 | 250 |

GENTLE AUTOMATIC SOLUTION SDN BHD

No.36, Jalan Industri USJ 1/13, Taman Perindustrian USJ 1, 47600 Subang Jaya, Selangor.

TEL: 603-8023 7743 / 8743 FAX: 603-8023 9743

email:sales@gentle.com.my