

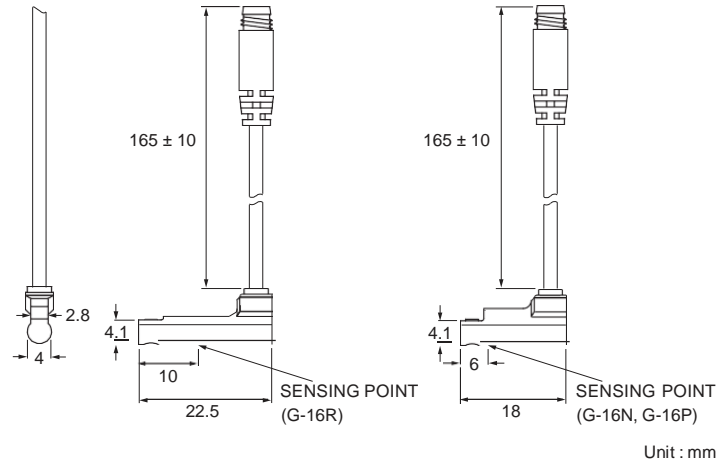
G-16 SERIES

Magnetic Sensor



Dimensions

G-16R, G-16N, G-16P /
G-16R-QD, G-16N-QD, G-16P-QD



QD Pinout

- 3 wire QD wiring**
- 2 wire QD wiring**
- 2 wire EQD wiring**

Specifications

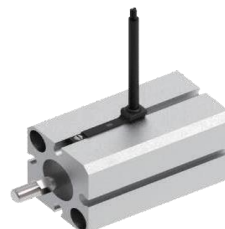
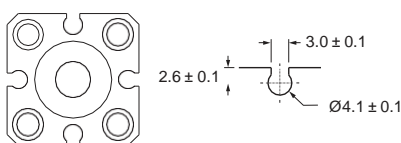
MODEL	G-16R	G-16N	G-16P
Connect Diagram			
Characteristics			
Wiring Method	2-Wire Type	3-Wire Type	
Switching Logic	SPST, Normally Open	Solid State Output, Normally Open	
Sensor Type	Reed Switch	NPN Current Sinking	PNP Current Sourcing
Operating Voltage	5 ~ 120 V DC / AC	5 ~ 30 V DC	
Switching Current	100 mA max.	50 mA max.	
Contact Rating ※1	6 W max.	1.5 W max.	
Current Consumption ※2	-	7 mA @ 24 V DC max.	9 mA @ 24 V DC max.
Voltage Drop ※2	3.5 V max.	1.5 V @ 50 mA max.	
Leakage Current ※2	-	0.01 mA max.	
Indicator	Red LED		Green LED
Lead Wire	Ø2.8 PUR - 26 AWG (0.15 mm ²) - 2 cores	Ø2.8 PUR - 26 AWG (0.15 mm ²) - 3 cores	
Operating Frequency	200 Hz	1000 Hz	
Magnet Requirement ※2, 3	70 Gauss	40 Gauss	
Temperature Range	-10 ~ 70 °C		
Shock ※4	30 G	9 G	50 G
Vibration ※5	9 G		
Enclosure	IEC 60529 IP67		
Protection Circuit ※6	1	3, 4	

NOTE

- ※1 : WARNING : Never exceed rating (Watt = Voltage × Amperage). Permanent damage to sensor will occur.
- ※2 : It bases on conditions of voltage 24 V DC, ambient temp. 25 °C and 2 meters cable of sensor. Voltage drop increases in pace with cable length.
- ※3 : Measuring standard target : Ø15.5 × Ø8 × 5t (Anisotropy rubber magnet)

- ※4 : Sin wave / X, Y, Z 3 directions / 3 times each direction / 11 ms each time.
- ※5 : Double amplitude 1.5 mm / 10 Hz ~ 55 Hz ~ 10 Hz (Sweep 1 min) / X, Y, Z 3 directions / 1 hour each time.
- ※6 : 1 = None / 2 = Short-circuit / 3 = Power Source Reverse polarity / 4 = Surge Suppression

Groove Dimensions



Unit: mm

Gentle Automatic Solution Sdn Bhd

No.36, Jalan Industri USJ 1/13, Taman Perindustrian USJ 1, 47600 Subang Jaya, Selangor.
TEL: 603-8023 7743 / 8743 FAX: 603-8023 9743

sales@gentle.com.my
<http://www.gentle.com.my>

<https://wa.me/60122738827>
<https://waze.to/lr/hw28325k63>