

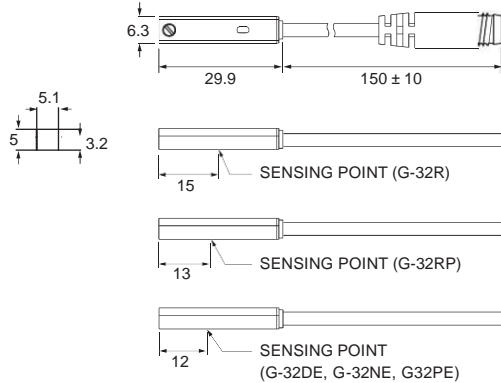
# G-32 SERIES

# Magnetic Sensor



## Dimensions

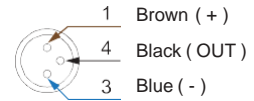
G-32R, G-32DE, G-32NE, G-32PE, G-32RP /  
G-32R-QD, G-32DE-QD, G-32NE-QD, G-32PE-QD,  
KT-32RP-QD



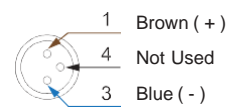
Unit : mm

## QD Pinout

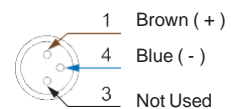
### 3 wire QD wiring



### 2 wire QD wiring



### 2 wire EQD wiring



## Specifications

MODEL	G-32R	G-32DE	G-32NE	G-32PE	G-32RP
Connect Diagram					
Characteristics					
Wiring Method	2-Wire Type		3-Wire Type		
Switching Logic	SPST, Normally Open	Solid State Output, Normally Open			SPST, Normally Open
Sensor Type	Reed Switch	-	NPN Current Sinking	PNP Current Sourcing	Reed Switch
Operating Voltage	5 ~ 240 V DC / AC		5 ~ 30 V DC		10 ~ 30 V DC / AC
Switching Current	100 mA max.	50 mA max.	200 mA max.		500 mA max.
Contact Rating *1	10 W max.	1.5 W max.	6 W max.		10 W max.
Current Consumption *2	-		6 mA @ 24 V DC max.		10 mA @ 24 V DC max.
Voltage Drop *2	3.5 V max.	3.7 V max.	0.5 V @ 200 mA max.		0.1 V @ 100 mA max.
Leakage Current *2	-	0.1 mA (40 uA) max.	0.01 mA max.		-
Indicator	Red LED			Green LED	Yellow LED
Lead Wire	Ø3.3 PVC - 24 AWG ( 0.22 mm <sup>2</sup> ) - 2 cores		Ø3.2 PVC - 24 AWG ( 0.22 mm <sup>2</sup> ) - 3 cores		
Operating Frequency	200 Hz	1000 Hz			200 Hz
Magnet Requirement *2, *3	70 Gauss	40 ~ 1000 Gauss			60 Gauss
Temperature Range	-10 ~ 70 °C				
Shock *4	30 G	50 G			30 G
Vibration *5	9 G				
Enclosure	IEC 60529 IP67				
Protection Circuit *6	1	3, 4			1

### NOTE

\*1 : WARNING : Never exceed rating ( Watt = Voltage × Amperage ).

Permanent damage to sensor will occur.

\*2 : It bases on conditions of voltage 24 V DC, ambient temp. 25 °C and 2 meters cable of sensor. Voltage drop increases in pace with cable length.

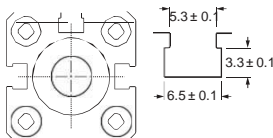
\*3 : Measuring standard target : Ø15.5 × Ø8 × 5l ( Anisotropy rubber magnet )

\*4 : Sin wave / X, Y, Z 3 directions / 3 times each direction / 11 ms each time.

\*5 : Double amplitude 1.5 mm / 10 Hz ~ 55 Hz ~ 10 Hz ( Sweep 1 min ) / X, Y, Z 3 directions / 1 hour each time.

\*6 : 1 = None / 2 = Short-circuit / 3 = Power Source Reverse polarity / 4 = Surge Suppression

## Groove Dimensions



## Bracket



Unit : mm

## Gentle Automatic Solution Sdn Bhd

No.36, Jalan Industri USJ 1/13, Taman Perindustrian USJ 1, 47600 Subang Jaya, Selangor.  
TEL: 603-8023 7743 / 8743 FAX: 603-8023 9743

sales@gentle.com.my

http://www.gentle.com.my

https://wa.me/60122738827

https://waze.to/lr/hw28325k63