

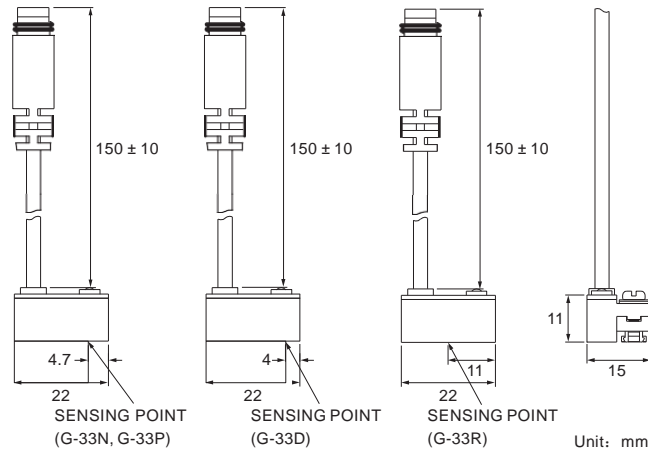
G-33 SERIES

Magnetic Sensor



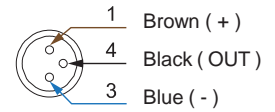
Dimensions

G-33R, G-33D, G-33N, G-33P /
G-33R-QD, G-33D-QD, G-33N-QD, G-33P-QD

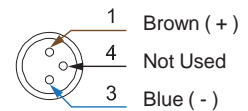


QD Pinout

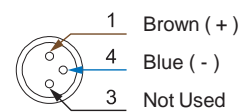
3 wire QD wiring



2 wire QD wiring



2 wire EQD wiring



Unit: mm

Specifications

MODEL	G-33R	G-33D	G-33N	G-33P
Connect Diagram				
Characteristics	2-Wire Type		3-Wire Type	
Wiring Method	SPST, Normally Open		Solid State Output, Normally Open	
Switching Logic	Reed Switch	-	NPN Current Sinking	PNP Current Sourcing
Sensor Type	5 ~ 240 V DC / AC	10 ~ 28 V DC	5 ~ 30 V DC	
Operating Voltage	100 mA max.	4 ~ 40 mA max.	200 mA max.	
Switching Current	10 W max.	1.5 W max.	6 W max.	
Contact Rating *1	-		22 mA @ 24 V DC max.	20 mA @ 24 V DC max.
Current Consumption *2	3.5 V max.		0.5 V max.	
Voltage Drop *2	-	1 mA max.	0.01 mA max.	
Leakage Current *2	Red LED	Green LED	Red LED	Green LED
Indicator	Ø3.3 PVC - 24 AWG (0.22 mm ²) - 2 cores		Ø3.2 PVC - 24 AWG (0.22 mm ²) - 3 cores	
Lead Wire	200 Hz		1000 Hz	
Operating Frequency	80 Gauss		70 Gauss	
Magnet Requirement *2, 3	-10 ~ 70 °C			
Temperature Range	30 G		50 G	
Shock *4	9 G			
Vibration *5	IEC 60529 IP67			
Enclosure	1	4	3, 4	
Protection Circuit *6				

NOTE

*1 : WARNING : Never exceed rating (Watt = Voltage × Amperage).

Permanent damage to sensor will occur.

*2 : It bases on conditions of voltage 24 V DC, ambient temp. 25 °C and 2 meters cable of sensor. Voltage drop increases in pace with cable length.

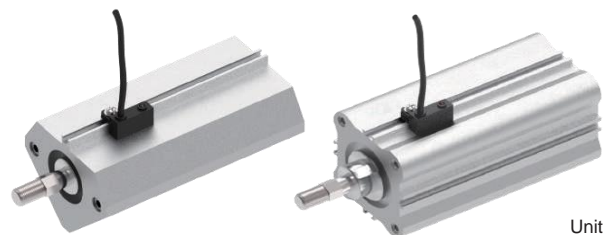
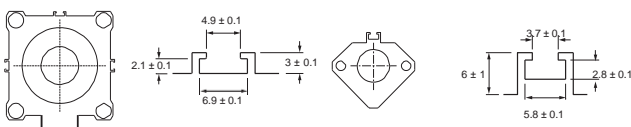
*3 : Measuring standard target : Ø15.5 × Ø8 × 5t (Anisotropy rubber magnet)

*4 : Sin wave / X, Y, Z 3 directions / 3 times each direction / 11 ms each time.

*5 : Double amplitude 1.5 mm / 10 Hz ~ 55 Hz ~ 10 Hz (Sweep 1 min) / X, Y, Z 3 directions / 1 hour each time.

*6 : 1 = None / 2 = Short-circuit / 3 = Power Source Reverse polarity / 4 = Surge Suppression

Groove Dimensions



Unit: mm

Gentle Automatic Solution Sdn Bhd

No.36, Jalan Industri USJ 1/13, Taman Perindustrian USJ1, 47600 Subang Jaya, Selangor.
TEL: 603-8023 7743 / 8743 FAX: 603-8023 9743

✉ sales@gentle.com.my

🌐 <http://www.gentle.com.my>

📞 <https://wa.me/60122738827>

📞 <https://waze.to/tr/hw28325k63>