

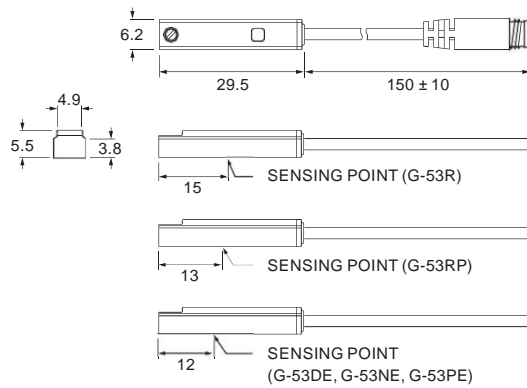
G-53 SERIES

Magnetic Sensor



Dimensions

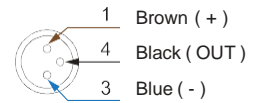
G-53R, G-53DE, G-53NE, G-53PE, G-53RP /
G-53R-QD, G-53DE-QD, G-53NE-QD, G-53PE-QD,
G-53RP-QD



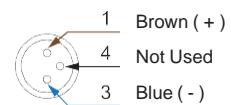
Unit : mm

QD Pinout

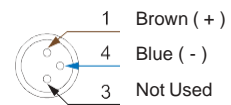
3 wire QD wiring



2 wire QD wiring



2 wire EQD wiring



Specifications

MODEL	G-53R	G-53DE	G-53NE	G-53PE	G-53RP
Connect Diagram					
Characteristics	2-Wire Type		3-Wire Type		
Wiring Method	2-Wire Type		3-Wire Type		
Switching Logic	SPST, Normally Open		Solid State Output, Normally Open		SPST, Normally Open
Sensor Type	Reed Switch	-	NPN Current Sinking	PNP Current Sourcing	Reed Switch
Operating Voltage	5 ~ 240 V DC / AC		5 ~ 30 V DC		10 ~ 30 V DC / AC
Switching Current	100 mA max.	50 mA max.	200 mA max.		500 mA max.
Contact Rating *1	10 W max.	1.5 W max.	6 W max.		10 W max.
Current Consumption *2			6 mA @ 24 V DC max.		10 mA @ 24 V DC max.
Voltage Drop *2	3.5 V max.	3.7 V max.	0.5 V @ 200 mA max.		0.1 V @ 100 mA max.
Leakage Current *2	-	0.1 mA (40 uA) max.	0.01 mA max.		-
Indicator		Red LED		Green LED	Yellow LED
Lead Wire	Ø3 PUR - 26 AWG (0.15 mm ²) - 2 cores		Ø3 PUR - 26 AWG (0.15 mm ²) - 3 cores		
Operating Frequency	200 Hz		1000 Hz		200 Hz
Magnet Requirement *2, 3	70 Gauss		40 ~ 1000 Gauss		70 Gauss
Temperature Range			-10 ~ 70 °C		
Shock *4	30 G		50 G		30 G
Vibration *5			9 G		
Enclosure			IEC 60529 IP67		
Protection Circuit *6	1		3, 4		1

NOTE

*1 : WARNING : Never exceed rating (Watt = Voltage × Amperage).

Permanent damage to sensor will occur.

*2 : It bases on conditions of voltage 24 V DC, ambient temp. 25 °C and 2 meters cable of sensor. Voltage drop increases in pace with cable length.

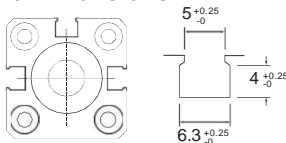
*3 : Measuring standard target : Ø15.5 × Ø8 × 5t (Anisotropy rubber magnet)

*4 : Sin wave / X, Y, Z 3 directions / 3 times each direction / 11 ms each time.

*5 : Double amplitude 1.5 mm / 10 Hz ~ 55 Hz ~ 10 Hz (Sweep 1 min) / X, Y, Z 3 directions / 1 hour each time.

*6 : 1 = None / 2 = Short-circuit / 3 = Power Source Reverse polarity / 4 = Surge Suppression

Groove Dimensions



Unit : mm

Gentle Automatic Solution Sdn Bhd

No.36, Jalan Industri USJ 1/13, Taman Perindustrian USJ 1, 47600 Subang Jaya, Selangor.
TEL: 603-8023 7743 / 8743 FAX: 603-8023 9743

sales@gentle.com.my

<http://www.gentle.com.my>

<https://wa.me/60122738827>

<https://waze.to/lr/hw28325k63>