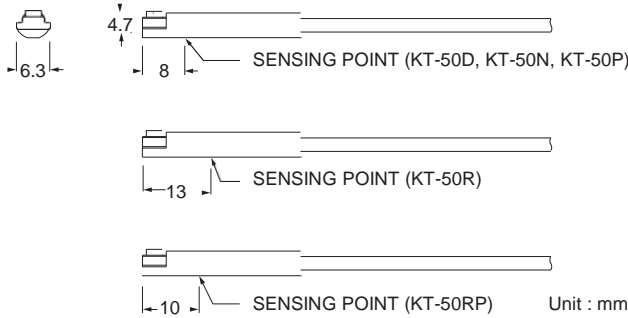
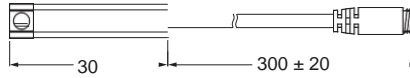


G-50 SERIES



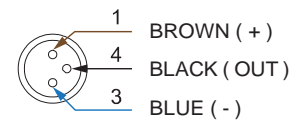
Dimensions

G-50R, G-50D, G-50N, G-50P, G-50RP, /
G-50R-QD, G-50D-QD, G-50N-QD, G-50P-QD,
G-50RP-QD

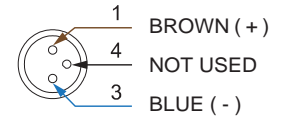


QD Pinout

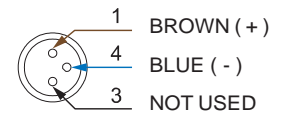
3 wire QD wiring



2 wire QD wiring



2 wire EQD wiring



Specifications

MODEL	G-50R	G-50D	G-50N	G-50P	G-50RP
Connect Diagram					
Characteristics					
Wiring Method	2-Wire Type		3-Wire Type		
Switching Logic	SPST, Normally Open	Solid State Output, Normally Open			SPST, Normally Open
Sensor Type	Reed Switch	-	NPN Current Sinking	PNP Current Sourcing	Reed Switch
Operating Voltage	5 ~ 240 V DC / AC	10 ~ 28 V DC	10 ~ 30 V DC		10 ~ 30 V DC / AC
Switching Current	100 mA max.	50 mA max.	200 mA max.		500 mA max.
Contact Rating *1	10 W max.	1.5 W max.	6 W max.		10 W max.
Current Consumption	-		20 mA @ 24 V DC max.		5 mA @ 24 V DC max.
Voltage Drop	3.5 V max.		1.5 V max.		0.1 V @ 100 mA max.
Leakage Current	-	0.8 mA max.	0.05 mA max.		-
Indicator	Red LED			Yellow LED	
Cable	Ø3 PUR - 26 AWG (0.15 mm ²) - 2 cores		Ø3 PUR - 26 AWG (0.15 mm ²) - 3 cores		
Operating Frequency	200 Hz	1000 Hz		200 Hz	
Magnet Requirement *2	70 Gauss				
Temperature Range	-10 ~ 70 °C				
Shock *3	30 G	50 G		30 G	
Vibration *4	9 G				
Enclosure Classification	IEC 60529 IP67				
Protection Circuit *5	1	2, 4	2, 3, 4		1

NOTE

*1 : WARNING : Never exceed rating (Watt = Voltage x Amperage).
Permanent damage to sensor will occur.

*2 : Measuring standard target : Ø15.5 x Ø8 x 5t (Anisotropy rubber magnet)

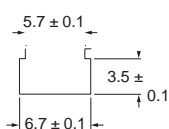
*3 : Sin wave / X , Y , Z 3 directions / 3 times each direction / 11 ms each time.

*4 : Double amplitude 1.5 mm / 10 Hz ~ 55 Hz ~ 10 Hz (Sweep 1 min) / X , Y , Z 3 directions / 1 hour each time.

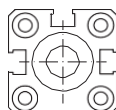
*5 : 1 = None / 2 = Short-circuit / 3 = Power Source Reverse polarity / 4 = Surge Suppression

DT Series

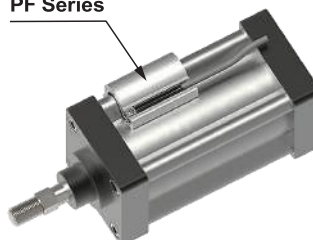
Groove Dimensions | Clamp / Bracket



BL-1 Series



PF Series



DT Series



Unit : mm

GENTLE AUTOMATIC SOLUTION SDN BHD

No.36, Jalan Industri USJ 1/13, Taman Perindustrian USJ 1, 47600 Subang Jaya, Selangor.

TEL: 603-8023 7743 / 8743 FAX: 603-8023 9743 email:sales@gentle.com.my