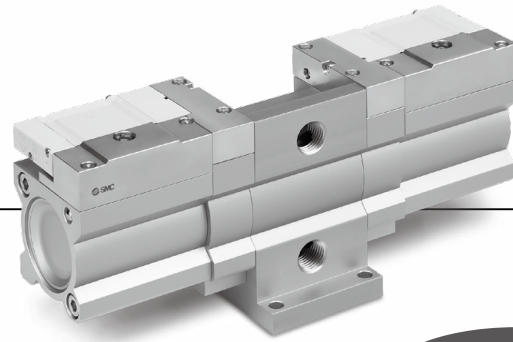


# Booster Regulator



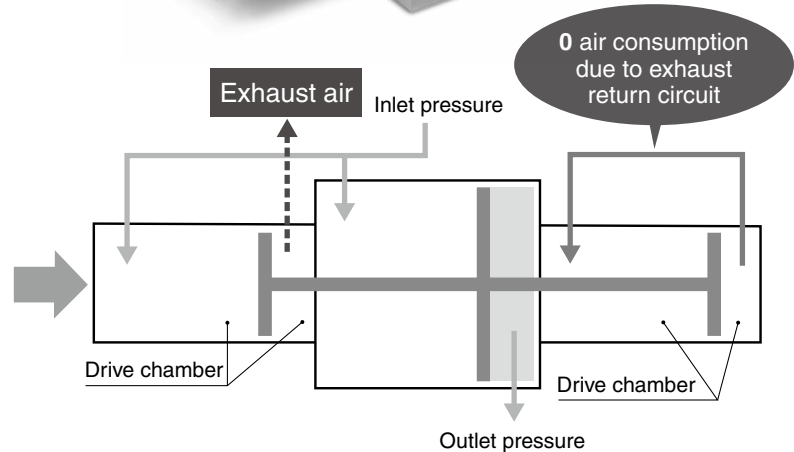
RoHS

Size: 10A

**Air consumption  
40% reduction<sup>\*1</sup>**

- 3 piston construction
- The drive chamber on one side can be operated by the exhaust return circuit.

\*1 Based on SMC's measuring conditions



**Operation noise: 65 dB(A)<sup>\*1</sup>**

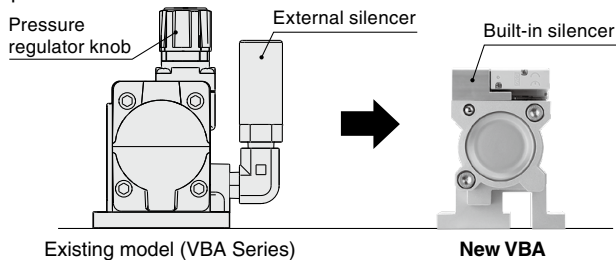
\*1 Based on SMC's measuring conditions

**15 dB (A) reduction compared with the existing model (VBA series)**

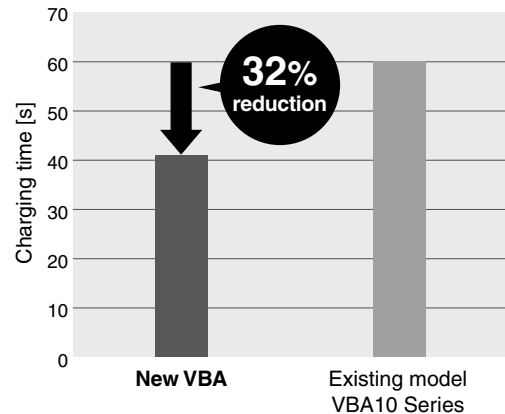
- Exhaust noise: Reduced noise due to exhaust of reused low-pressure air
- Metal noise: Reduced noise due to the adoption of a construction in which the internal switching part doesn't come into contact with any metal parts

**Simple, compact shape**

- Built-in silencer
- No longer any need for a pressure regulator knob due to the fixed pressure increase ratio



**Charging time: 32% shorter**



\* Inlet pressure: 0.4 MPa, Air tank: 10 L

**Mounting compatibility with the existing model (VBA series)**

- Can be mounted on an air tank (VBAT series)  
(The air tank must be ordered separately.)



**Can be mounted vertically**



**VBA-X3145**

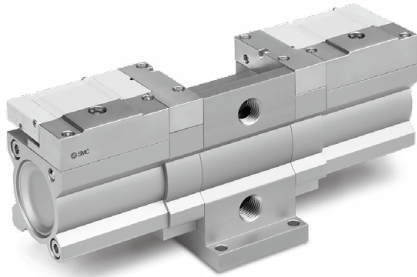
GENTLE AUTOMATIC SOLUTION SDN BHD

No. 36 Jalan Industri USJ 1/13, Taman Perindustrian USJ 1, 47600 Subang Jaya, Selangor. TEL: 603-8023 7743 / 8743 FAX: 603-8023 9743

email: sales@gentle.com.my

# VBA-X3145

## Specifications

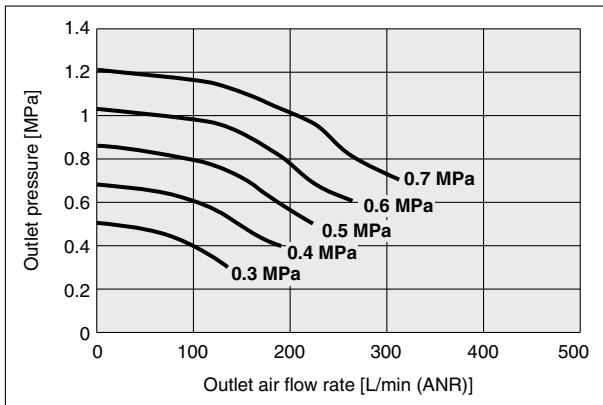


Model	VBA-X3145	
Fluid	Compressed air	
Pressure increase ratio	1.7 times (Fixed)	
Pressure adjustment mechanism	None	
Max. flow rate*1	L/min (ANR)	230
Outlet pressure range	MPa	0.3 to 1.2
Inlet pressure range	MPa	0.2 to 0.7
Proof pressure	MPa	1.8
Port size (IN, OUT)	Rc1/4	
Tank connection port (with plug)	Rc1/4	
Ambient and fluid temperatures	°C	
Installation	Horizontal, Vertical	
Lubrication	Grease (Non-lube)	
Weight	kg	1.2

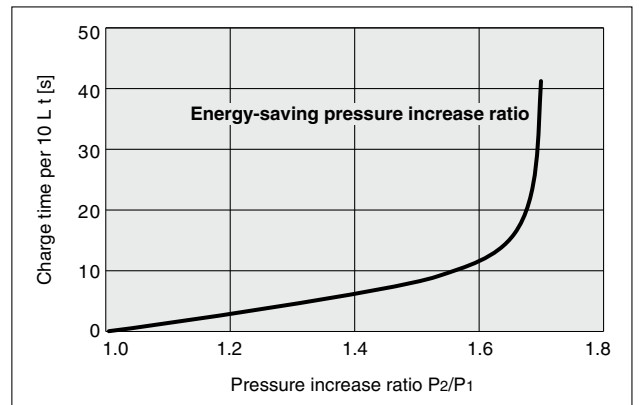
\*1 Flow rate at IN = OUT = 0.5 MPa.

## Flow Rate Characteristics/Charge Characteristics

### Flow rate characteristics



### Charge characteristics



## Dimensions

