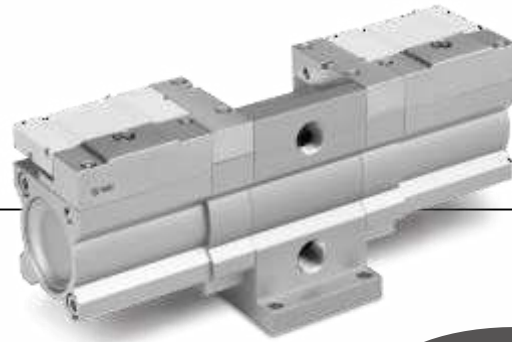


VBA-X3145 Booster Regulator

Size: 10A

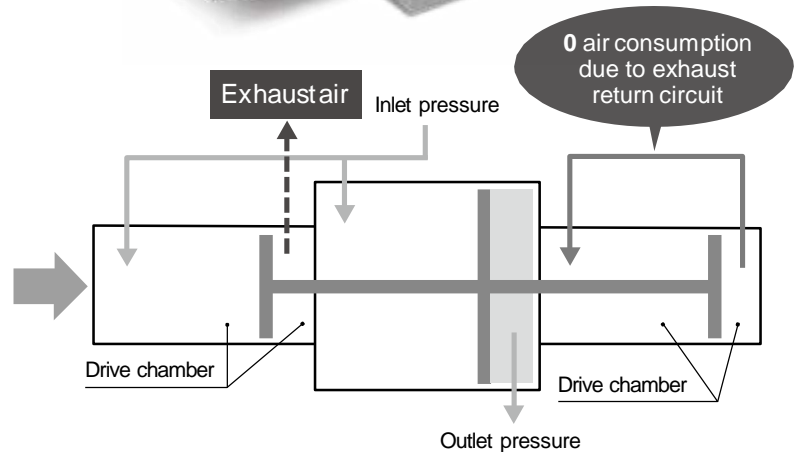


RoHS

**Air consumption
40% reduction***

- 3 piston construction
- The drive chamber on one side can be operated by the exhaust return circuit.

*1 Based on SMC's measuring conditions



Operation noise: 65 dB(A)*1

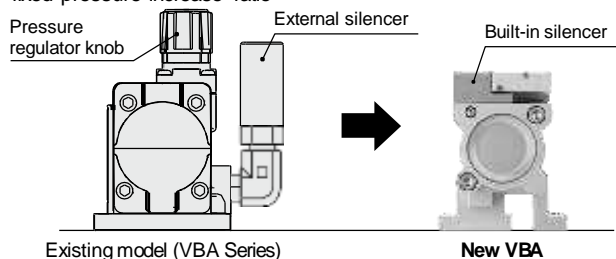
*1 Based on SMC's measuring conditions

15 dB (A) reduction compared with the existing model (VBA series)

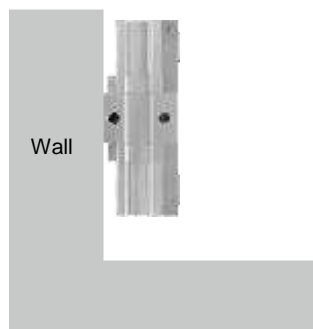
- Exhaust noise: Reduced noise due to exhaust of reused low-pressure air
- Metal noise: Reduced noise due to the adoption of a construction in which the internal switching part doesn't come into contact with any metal parts

Simple, compact shape

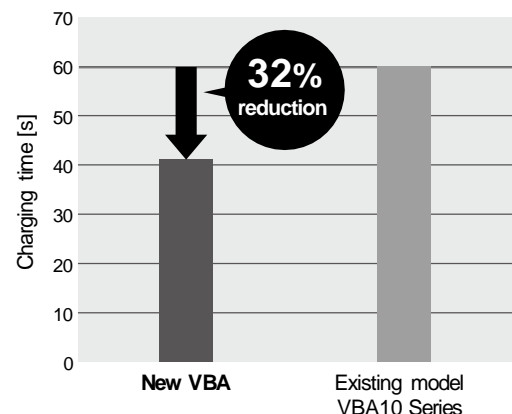
- Built-in silencer
- No longer any need for a pressure regulator knob due to the fixed pressure increase ratio



Can be mounted vertically



Charging time: 32% shorter



* Inlet pressure: 0.4 MPa, Air tank: 10 L

Mounting compatibility with the existing model (VBA series)

- Can be mounted on an air tank (VBAT series)
(The air tank must be ordered separately.)



VBA-X3145



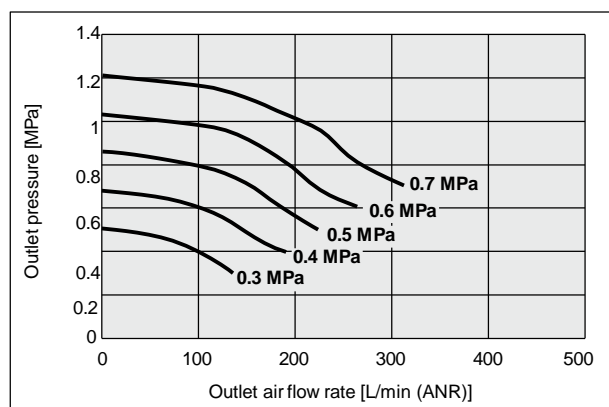
Specifications

Model	VBA-X3145	
Fluid	Compressed air	
Pressure increase ratio	1.7 times (Fixed)	
Pressure adjustment mechanism	None	
Max. flow rate*1	L/min (ANR)	230
Outlet pressure range	MPa	0.3 to 1.2
Inlet pressure range	MPa	0.2 to 0.7
Proof pressure	MPa	1.8
Port size (IN, OUT)	Rc1/4	
Tank connection port (with plug)	Rc1/4	
Ambient and fluid temperatures	°C	2 to 50 (No freezing)
Installation	Horizontal, Vertical	
Lubrication	Grease (Non-lube)	
Weight	kg	1.2

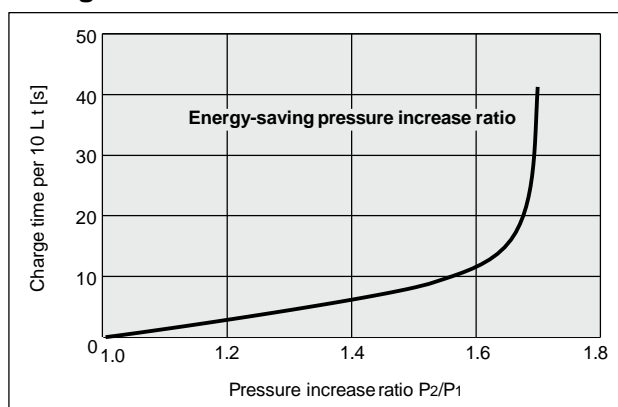
*1 Flow rate at IN = OUT = 0.5 MPa.

Flow Rate Characteristics/Charge Characteristics

Flow rate characteristics



Charge characteristics



Dimensions

