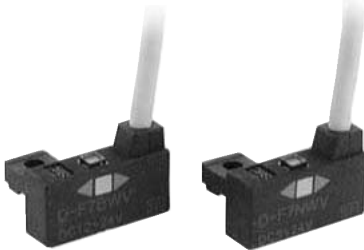


# 2-Color Indication Type Solid State Auto Switch Rail Mounting Style D-F7NWV/D-F7BWV



## Grommet Electrical entry: Perpendicular

The proper operating range can be determined by the color of the light.  
(Red → Green ← Red)



## Auto Switch Specifications

PLC: Programmable Logic Controller

D-F7□WV (With indicator light)		
Auto switch model	D-F7NWV	D-F7BWV
Wiring type	3-wire	2-wire
Output type	NPN	—
Applicable load	IC circuit, Relay, PLC	24 VDC Relay, PLC
Power supply voltage	5, 12, 24 VDC (4.5 to 28 VDC)	—
Current consumption	10 mA or less	—
Load voltage	28 VDC or less	24 VDC (10 to 28 VDC)
Load current	40 mA or less	5 to 40 mA
Internal voltage drop	1.5 V or less (0.8 V or less at 10 mA load current)	4 V or less
Leakage current	100 μA or less at 24 VDC	0.8 mA or less at 24 VDC
Indicator light	Operating range ..... Red LED illuminates. Proper operating range ..... Green LED illuminates.	
Standard	CE marking	

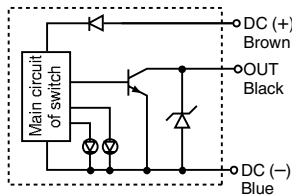
• Lead wires — Oilproof heavy-duty vinyl cord,  $\phi 3.4$ , 0.2 mm<sup>2</sup>, 3 cores (Brown, Black, Blue), 2 cores (Brown, Blue), 0.5 m

Note 1) Refer to page 1272 for solid state auto switch common specifications.

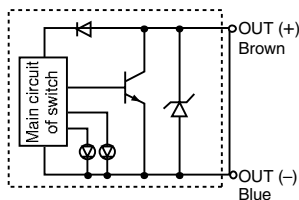
Note 2) Refer to page 1272 for lead wire lengths.

## Auto Switch Internal Circuit

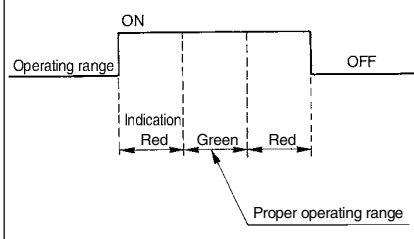
### D-F7NWV



### D-F7BWV



## Indicator light/Display method



## Mass

(g)

Auto switch model	D-F7NWV	D-F7BWV
Lead wire length (m)	0.5	13
	3	57
	5	92

## Dimensions

(mm)

