

# 2-Color Indication Type Solid State Auto Switch Direct Mounting Style

## D-M5NW/D-M5PW/D-M5BW CE

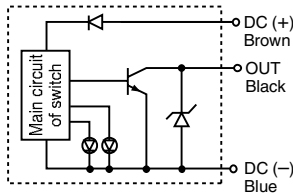
### Grommet

The proper operating range can be determined by the color of the light.  
(Red → Green ← Red)

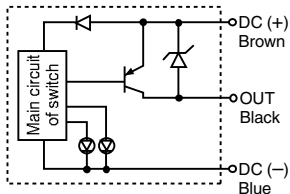


### Auto Switch Internal Circuit

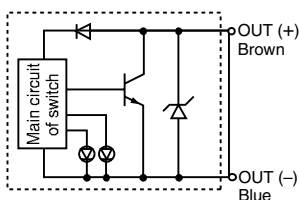
#### D-M5NW



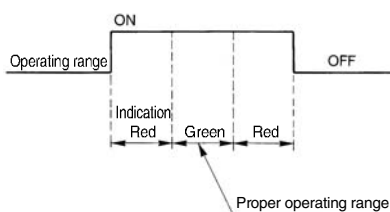
#### D-M5PW



#### D-M5BW



### Indicator light/Display method



### Auto Switch Specifications

PLC: Programmable Logic Controller

D-M5□W (With indicator light)			
Auto switch model	D-M5NW	D-M5PW	D-M5BW
Wiring type	3-wire		2-wire
Output type	NPN	PNP	—
Applicable load	IC circuit, Relay, PLC		24 VDC Relay, PLC
Power supply voltage	5, 12, 24 VDC (4.5 to 28 VDC)		—
Current consumption	10 mA or less		—
Load voltage	28 VDC or less	—	24 VDC (10 to 28 VDC)
Load current	40 mA or less	80 mA or less	5 to 40 mA
Internal voltage drop	1.5 V or less (0.8 V or less at 10 mA load current)	0.8 V or less	4 V or less
Leakage current	100 μA or less at 24 VDC		0.8 mA or less at 24 VDC
Indicator light	Operating range ..... Red LED illuminates. Proper operating range ..... Green LED illuminates.		
Standard	CE marking		

• Lead wires — Oilproof heavy-duty vinyl cord,  $\phi 3.4$ , 0.2 mm<sup>2</sup>, 3 cores (Brown, Black, Blue), 2 cores (Brown, Blue) 0.5 m

Note 1) Refer to page 1272 for solid state auto switch common specifications.

Note 2) Refer to page 1272 for lead wire lengths.

### Mass

(g)

Auto switch model	D-M5NW	D-M5PW	D-M5BW
Lead wire length (m)	0.5	16	14
	3	60	53
	5	95	84

### Dimensions

(mm)

