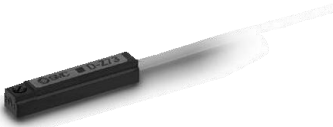


Reed Auto Switch Direct Mounting Type D-Z73/D-Z76/D-Z80



Grommet



⚠ Caution

Precautions

1. Do not drop or bump the auto switch while handling it as it may result in the auto switch breaking.
2. Do not remove the protective cover attached to the product body until the product is ready to be mounted on the actuator.
3. Fix the auto switch with the existing screw installed on the auto switch body. The auto switch may be damaged if a screw other than the one supplied is used.

Auto Switch Specifications

PLC: Programmable Logic Controller

D-Z7 (With indicator light)		D-Z76		D-Z80	
Auto switch model		D-Z73		D-Z76	
Applicable load		Relay, PLC		IC circuit	
Load voltage	24 VDC (4)	100 VAC	4 to 8 VDC		
Max. load current and load current range ³⁾	5 to 40 mA	5 to 20 mA	20 mA		
Internal circuit ⁵⁾	e		t		
Contact protection circuit	None				
Internal voltage drop	2.4 V or less (Up to 20 mA)/3 V or less (Up to 40 mA)		0.8 V or less		
Indicator light	Red LED illuminates when turned ON.				
Standard	CE/UKCA marking				
D-Z8 (Without indicator light)		D-Z80			
Auto switch model		D-Z80			
Applicable load		Relay, PLC, IC circuit			
Load voltage	24 V ^{AC} or less	48 V ^{AC} _{DC}	100 V ^{AC} _{DC}		
Maximum load current	50 mA	40 mA	20 mA		
Internal circuit ⁵⁾	r				
Contact protection circuit	None				
Internal resistance	1 Ω or less (Including 3 m lead wire)				
Standard	CE/UKCA marking				

Oilproof Heavy-duty Lead Wire Specifications

Auto switch model		D-Z73	D-Z76	D-Z80
Sheath	Outside diameter [mm]	ϕ 2.7	ϕ 3.4	ϕ 2.7
Insulator	Number of cores	2 cores (Brown/Blue)	3 cores (Brown/Blue/Black)	2 cores (Brown/Blue)
	Outside diameter [mm]	ϕ 1.1		
Conductor	Effective area [mm ²]	0.18	0.2	0.18
	Strand diameter [mm]	circuit diagram (numbers q to u ϕ 0.08 on page 1587.		
Lead wire length [m]	Standard	1		17

Note 2) Refer to page 1584 for lead wire lengths.

Note 3) Under 5 mA, the strength of the indicator light is poor. In some cases, visibility of the indicator light will not be possible where the output signal is less than 2.5 mA. However, there is no problem in terms of contact output, when an output signal exceeds 1 mA or more.

Note 4) The auto switches can operate at 12 VDC, but consider the internal voltage drop of the auto switch described in Reed Auto Switch Precautions on page 12.

Weight

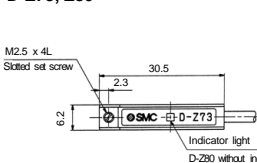
(g)

Auto switch model		D-Z73	D-Z76	D-Z80
Lead wire length	0.5 m (Nil)	7	10	7
	3 m (L)	31	55	31
	5 m (Z)	50	—	—

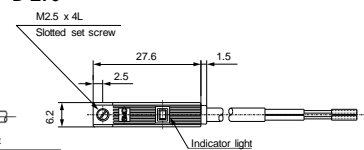
Dimensions

(mm)

D-Z73, Z80



D-Z76



Gentle Automatic Solution Sdn Bhd

No.36, Jalan Industri USJ 1/13, Taman Perindustrian USJ 1, 47600 Subang Jaya, Selangor.

TEL: 603-8023 7743 / 8743 FAX: 603-8023 9743

sales@gentle.com.my

www.gentle.com.my

0122738827

waze.co/1r/hw28325k63

