

G-32-EX SERIES

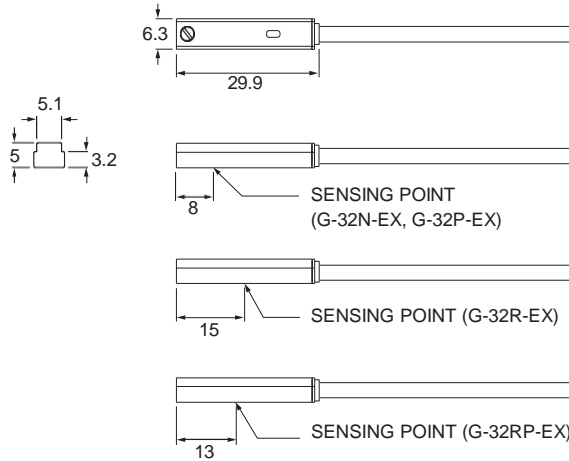


Explosion Proof

Dimensions

G-32R-EX, G-32N-EX, G-32P-EX, G-32RP-EX

M8 Connector option is not available



Unit : mm

Specifications

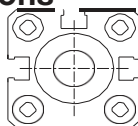
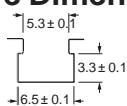
MODEL	G-32R-EX	G-32N-EX	G-32P-EX	G-32RP-EX
Connect Diagram				
Characteristics				
Wiring Method	2-Wire Type	3-Wire Type		
Switching Logic	SPST, Normally Open	Solid State Output, Normally Open		SPST, Normally Open
Sensor Type	Reed Switch	NPN Current Sinking	PNP Current Sourcing	Reed Switch
Operating Voltage	5 ~ 30 V DC / AC	10 ~ 30 V DC		10 ~ 30 V DC / AC
Switching Current	100 mA max.			
Contact Rating *1	10 W max.	3 W max.		10 W max.
Current Consumption *2	-	17 mA @ 24 V DC max.	8 mA @ 24 V DC max.	10 mA @ 24 V DC max.
Voltage Drop *2	3.5 V max.	1.5 V max.		0.1 V @ 100 mA max.
Leakage Current *2	-	0.01 mA max.		-
Indicator	Red LED		Yellow LED	
Lead Wire	Ø3.3 PVC - 24 AWG (0.22 mm ²) - 2 cores		Ø3.2 PVC - 24 AWG (0.22 mm ²) - 3 cores	
Operating Frequency	200 Hz	1000 Hz		200 Hz
Magnet Requirement *2, 3	70 Gauss	60 Gauss		
Temperature Range	-10 ~ 70 °C			
Shock *4	30 G	50 G		30 G
Vibration *5	9 G			
Enclosure	IEC 60529 IP67			
Protection Circuit *6	1	2, 3, 4		1
CE ATEX APPROVAL Baseefa14ATEX0118	II 3 GD Ex ic IIB T4 Gc (-10 °C ≤ Ta ≤ +70 °C) Ex ic IIIC T135 °C Dc (-10 °C ≤ Ta ≤ +70 °C)			

NOTE

- *1 : WARNING: Never exceed rating (Watt = Voltage × Amperage). Permanent damage to sensor will occur.
- *2 : It bases on conditions of voltage 24 V DC, ambient temp. 25 °C and 2 meters cable of sensor. Voltage drop increases in pace with cable length.
- *3 : Measuring standard target : Ø15.5 × Ø8 × 5t (Anisotropy rubber magnet)

Bracket

Groove Dimensions



Unit : mm

Gentle Automatic Solution Sdn Bhd

No.36, Jalan Industri USJ 1/13, Taman Perindustrian USJ 1, 47600 Subang Jaya, Selangor.
TEL: 603-8023 7743 / 8743 FAX: 603-8023 9743

sales@gentle.com.my
www.gentle.com.my

0122738827

[waze.to/lr/hw28325k63](https://wa.me/60380237743)