

G-39 SERIES

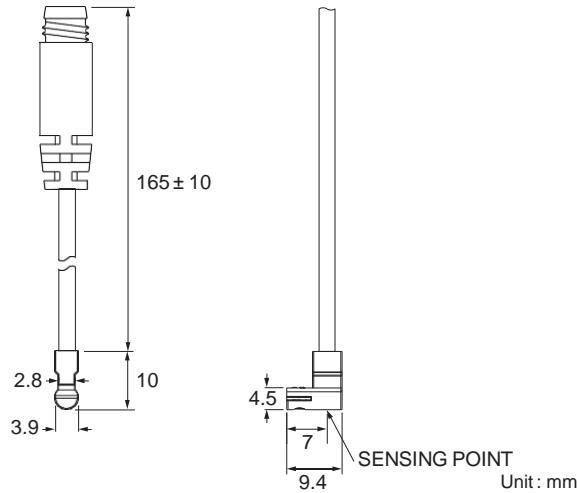


Compact Size



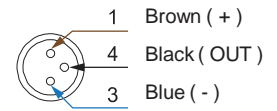
Dimensions

G-39DE, G-39NE, G-39PE /
G-39DE-QD, G-39NE-QD, G-39PE-QD

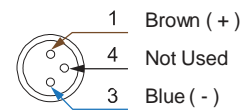


QD Pinout

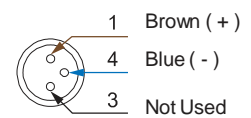
3 wire QD wiring



2 wire QD wiring



2 wire EQD wiring



Specifications

MODEL	G-39DE	G-39NE	G-39PE
Connect Diagram			
Characteristics			
Wiring Method	2-Wire type	3-Wire type	
Switching Logic	Solid State Output, Normally Open		
Sensor Type	-	NPN Current Sinking	PNP Current Sourcing
Operating Voltage	5 ~ 30 V DC		
Switching Current	50 mA max.	80 mA max.	
Contact Rating ※1	1.5 W max.	2.2 W max.	
Current Consumption ※2	-	6 mA @ 24 V DC max.	
Voltage Drop ※2	3.5 V max.	0.5 V @ 50 mA max.	
Leakage Current ※2	0.1 mA (40 uA) max.	0.01 mA max.	
Indicator	Red LED		
Lead Wire	Ø2.6 PVC - 26 AWG (0.15 mm ²) - 2 cores	Ø2.6 PVC - 26 AWG (0.15 mm ²) - 3 cores	
Operating Frequency	1000 Hz		
Magnet Requirement ※2, 3	40 ~ 1000 Gauss		
Temperature Range	-10 ~ 70 °C		
Shock ※4	50 G		
Vibration ※5	9 G		
Enclosure	IEC 60529 IP67		
Protection Circuit ※6	3, 4		

NOTE

※1 : WARNING: Never exceed rating (Watt= Voltage × Amperage).

Permanent damage to sensor will occur.

※2 : It bases on conditions of voltage 24 V DC, ambient temp. 25 °C and 2 meters cable of sensor. Voltage drop increases in pace with cable length.

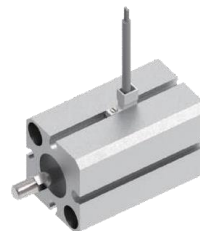
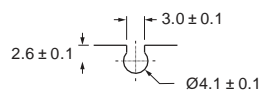
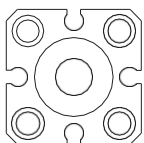
※3 : Measuring standard target : Ø15.5 × Ø8 × 5t (Anisotropy rubber magnet)

※4 : Sin wave / X, Y, Z 3 directions / 3 times each direction / 11 ms each time.

※5 : Double amplitude 1.5 mm / 10 Hz ~ 55 Hz ~ 10 Hz (Sweep 1 min) / X, Y, Z 3 directions / 1 hour each time.

※6 : 1 = None / 2 = Short-circuit / 3 = Power Source Reverse polarity / 4 = Surge Suppression

Groove Dimensions



Unit : mm

Gentle Automatic Solution Sdn Bhd

No.36, Jalan Industri USJ 1/13, Taman Perindustrian USJ 1, 47600 Subang Jaya, Selangor.
TEL: 603-8023 7743 / 8743 FAX: 603-8023 9743

sales@gentle.com.my
www.gentle.com.my

0122738827

waze.to/lr/hw28325k63