

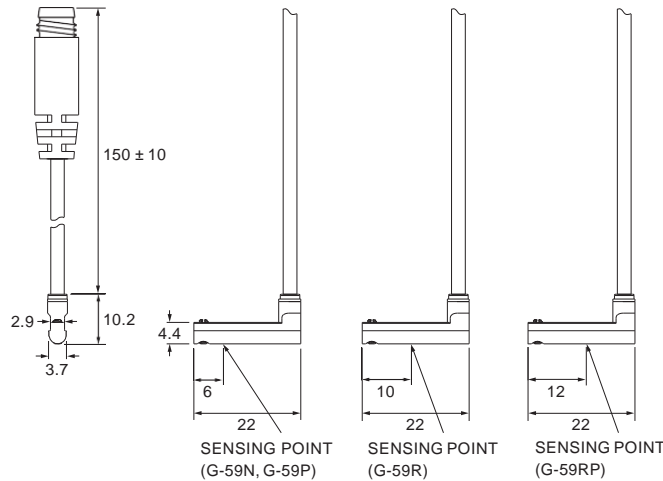
# G-59 SERIES

# Magnetic Sensor



## Dimensions

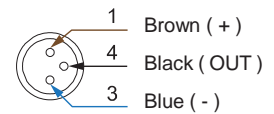
G-59R, G-59N, G-59P, G-59RP /  
G-59R-QD, G-59N-QD, G-59P-QD, G-59RP-QD



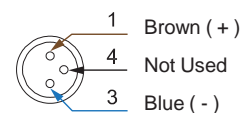
Unit : mm

## QD Pinout

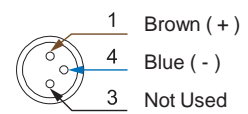
### 3 wire QD wiring



### 2 wire QD wiring



### 2 wire EQD wiring



## Specifications

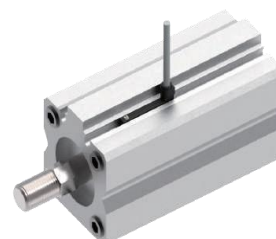
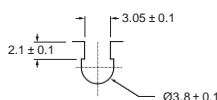
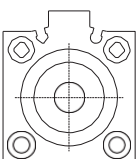
MODEL	G-59R	G-59N	G-59P	G-59RP
Connect Diagram				
Characteristics				
Wiring Method	2-Wire Type	3-Wire Type		
Switching Logic	SPST, Normally Open	Solid State Output, Normally Open		SPST, Normally Open
Sensor Type	Reed Switch	NPN Current Sinking	PNP Current Sourcing	Reed Switch
Operating Voltage	5 ~ 120 V DC / AC	10 ~ 30 V DC		10 ~ 30 V DC / AC
Switching Current	100 mA max.	200 mA max.		500 mA max.
Contact Rating *1	10 W max.	6 W max.		10 W max.
Current Consumption *2	-	10 mA @ 24 V DC max.		5 mA @ 24 V DC max.
Voltage Drop *2	3.5 V max.	0.5 V @ 50 mA max.		0.1 V @ 100 mA max.
Leakage Current *2	-	0.01 mA max.		-
Indicator	Red LED		Yellow LED	
Lead Wire	Ø2.5 PUR - 28 AWG ( 0.082 mm <sup>2</sup> ) - 2 cores	Ø2.5 PUR - 28 AWG ( 0.082 mm <sup>2</sup> ) - 3 cores		
Operating Frequency	200 Hz	1000 Hz		200 Hz
Magnet Requirement *2, 3	70 Gauss	40 Gauss		50 Gauss
Temperature Range	-10 ~ 70 °C			
Shock *4	30 G	50 G		30 G
Vibration *5	9 G			
Enclosure	IEC 60529 IP67			
Protection Circuit *6	1	3, 4		1

### NOTE

- \*1 : WARNING : Never exceed rating ( Watt = Voltage × Amperage ). Permanent damage to sensor will occur.
- \*2 : It bases on conditions of voltage 24 V DC, ambient temp. 25 °C and 2 meters cable of sensor. Voltage drop increases in pace with cable length.
- \*3 : Measuring standard target : Ø15.5 × Ø8 × 5t ( Anisotropy rubber magnet )

- \*4 : Sin wave / X, Y, Z 3 directions / 3 times each direction / 11 ms each time.
- \*5 : Double amplitude 1.5 mm / 10 Hz ~ 55 Hz ~ 10 Hz ( Sweep 1 min ) / X, Y, Z 3 directions / 1 hour each time.
- \*6 : 1 = None / 2 = Short-circuit / 3 = Power Source Reverse polarity / 4 = Surge Suppression

## Groove Dimensions



Unit : mm

## Gentle Automatic Solution Sdn Bhd

No.36, Jalan Industri USJ 1/13, Taman Perindustrian USJ 1, 47600 Subang Jaya, Selangor.  
TEL: 603-8023 7743 / 8743 FAX: 603-8023 9743

sales@gentle.com.my  
 www.gentle.com.my

0122738827  
 waze.to/lr/hw28325k63